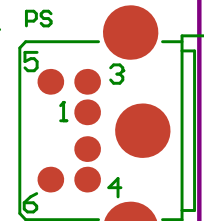
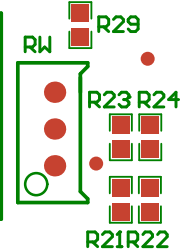
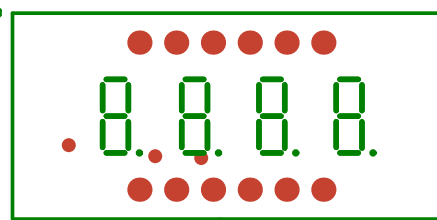
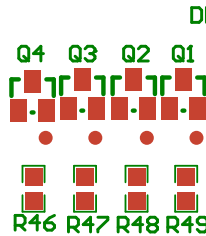


LCD 20

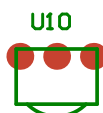
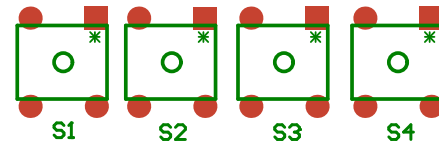
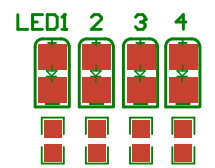
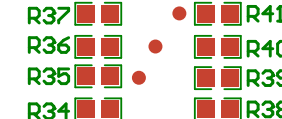
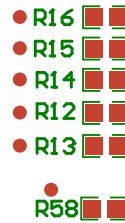
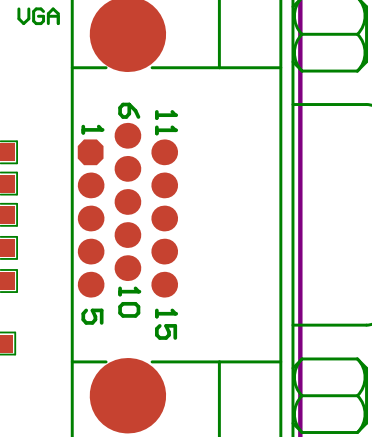
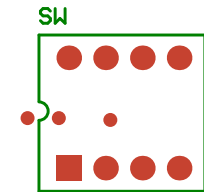
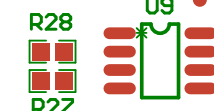
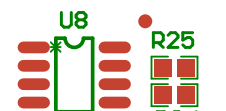
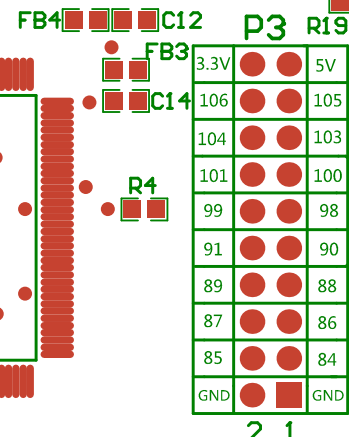
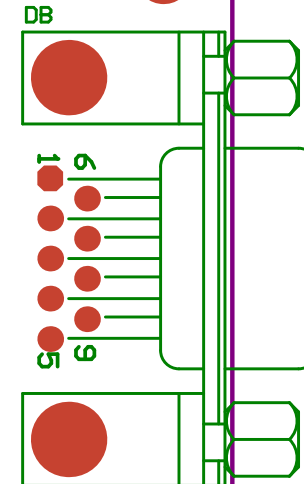
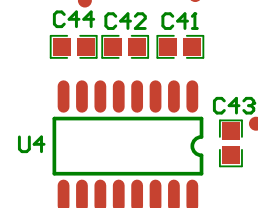
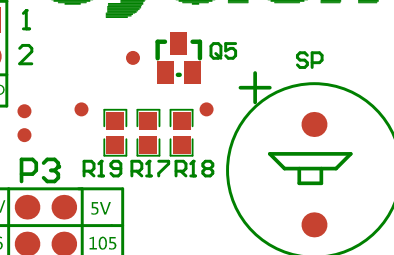
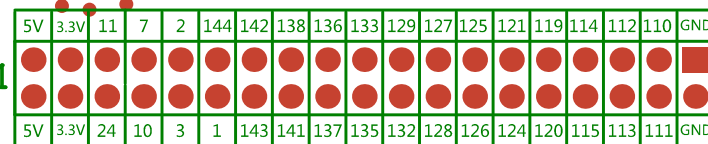
RZ-EasyFPGA A2.1

睿智研发-助学
www.rzrd.net

USB供电



Cyclone IV



JTAG

RESET

AS

P2

P1

U5

U6

U7

X

C9

C13

FB1

C11

FB2

R3

R5

R6

R7

R11

R10

R8

R9

C10

R2

C8

C7

C1

U1

U2

U3

C6

2.5V

GND

3.3V

5V

1.2V

5V

3.3V

5V

GND

11

7

2

144

142

138

136

133

129

127

125

121

119

114

112

110

GND

5V

3.3V

24

10

3

1

143

141

137

135

132

128

126

124

120

115

113

111

GND

1

2

106

105

104

103

101

100

99

98

91

90

89

88

87

86

85

84

GND

GND

2

1

3.3V

5V

106

105

104

103

101

100

99

98

91

90

89

88

87

86

85

84

GND

GND

2

1

3.3V

5V

106

105

104

103

101

100

99

98

91

90

89

88

87

86

85

84

GND

GND

2

1

3.3V

5V

106

105

104

103

101

100

99

98

91

90

89

88

87

86

85

84

GND

GND

2

1

3.3V

5V

106

105

104

103

101

100

99

98

91

90

89

88

87

86

85

84

GND

GND

2

1

3.3V

5V

106

105

104

103

101

100

99

98

91

90

89

88

87

86

85

84

GND

GND

2

1

3.3V

5V

106

105

104

103

101

100

99

98

91

90

89

88

87

86

85

84

GND

GND

2

1

3.3V

5V

106

105

104

103

101

100

99

98

91

90

89

88

87

86

85

84

GND

GND

2

1

3.3V

5V

106

105

104

103

